

Interactive Electronic Systems

IES Touch Screen for the ISY Control System Operating Manual

Rev 1.3

Introduction.....	2
Software Overview	2
How to Install.....	3
USB Driver Installation	3
Setting Username and Password.....	8
Touch Screen calibration	8
Touch Screen Operation	9
LED Description	9
Welcome Screen	11
Scenes Screen.....	11
Manual Mode	12
Manual Control	12
Setup Screen.....	13
Audio Setup Screen.....	14
Firmware and Screen Loader Programs.....	15
Firmware Loader Program.....	15
Screen Loader Program.....	16

Introduction

IES Touch Screen for the ISY Control System

The IES Easy Touch-P is a Power Over Ethernet (PoE) Touch Screen that is fully integrated with the Universal Devices ISY series of controllers.

The EasyTouch-P is a cost effective full featured color 3.6 inch $\frac{1}{4}$ VGA Touch Panel unit. The device features an active matrix wide viewing angle LCD display with exceptional brightness and high contrast. The unit is powered over the Ethernet and therefore requires only one Cat 5 cable which carries both data and power. The Touch Screen is available in two versions one mounting in a standard 2 gang electrical box and another in a table top enclosure.

The EasyTouch-P is self-configuring: it automatically finds ISY on the local area network, retrieves the configuration parameters, and starts communicating with ISY without any user intervention or additional software or programming. The Touch Screen provides the following capabilities out of the box.

Full control of all devices divided by rooms configured through ISY's floor plan utility.

Full control of all scenes as defined by ISY.

Instantaneous real time feedback and updates to the status of all devices as they occur.

Software Overview

The IES EasyTouch-P requires no configuration. The unit is self-configuring and automatically finds the ISY on the local area network, retrieves the configuration parameters, and starts communicating with ISY without any user intervention or additional software or programming.

It should also be noted that all configuration parameters are retrieved from the ISY equipment. In order to function properly the user must set up rooms and switches using the ISY Floor plan utility as outlined in the ISY user manual. Scenes must also be setup in the ISY equipment.

NOTES:

Please be sure that ISY SW configuration is the latest available (at the time of this writing Rev 2.6.4)

Time and date are retrieved from the ISY equipment.

If new switches are added or deleted to the system, the update button must be pressed on the Touch Screen setup screen to request an update from the ISY equipment. **Placing your finger over the IES Icon and holding for approximately 3 seconds will navigate to the Setup Screen.**

While no configuration is necessary the user should be aware that additional SW is available for downloading new firmware revisions as well as to design and download new screens. The firmware loader as well as the screen loader are found in the utilities folder and are described later. The IES SKINS screen designer program can be downloaded from the IES website.

How to Install

The Touch Screen should be removed from the box and the protective plastic coverings should be removed (there may be protective plastic on the front of the bezel as well as on the top of the LCD display. Be very careful when removing the protective covering of the LCD display).

Installation includes the connection of the CAT5 cable to the Touch screen RJ45 connector. Please note that the EasyTouch-P is a Power over Ethernet (PoE) powered device. **It must be powered by a PoE enabled switch or Injector.**

Download and Run the IES SW Installation downloaded from the IES website (iescorp-usa.com)

When Touch Screen is connected to the network it will immediately attempt to connect to the ISY controller. The Status area on the Touch Screen will indicate “Discovering” and then “Connected”

At this point the Touch Screen is connected to the ISY and operational

USB Driver Installation

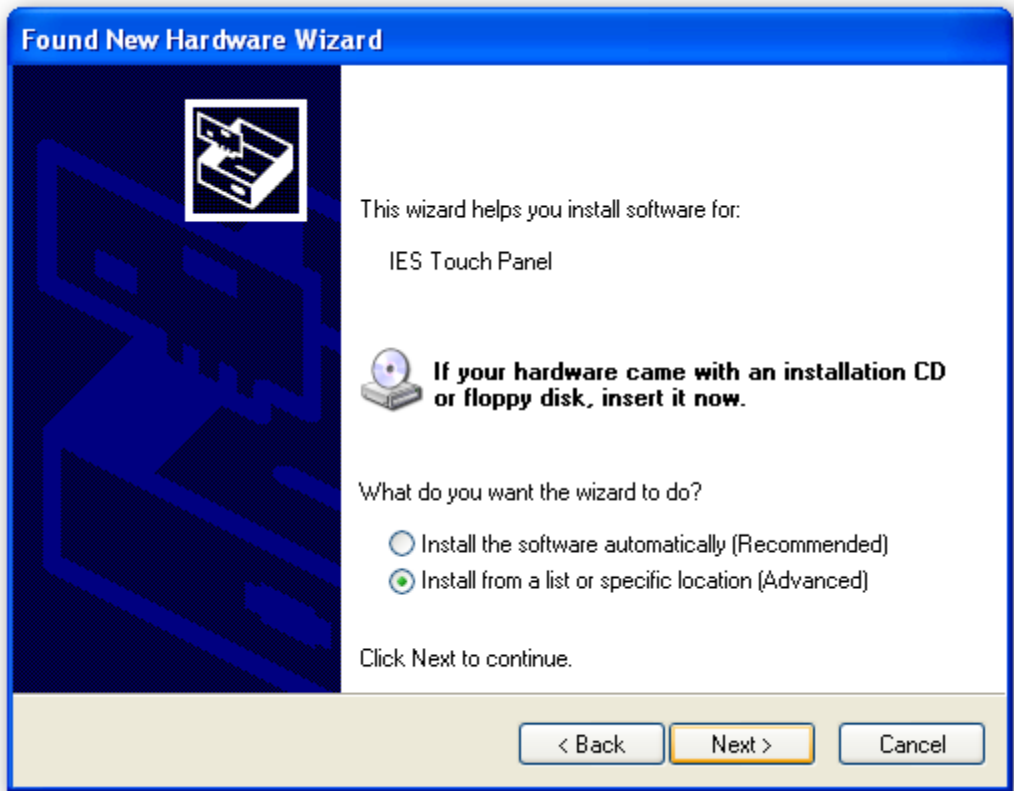
USB Driver Installation will occur automatically when you connect a cable from the USB port to the 5 pin mini 5 pin connector on the Touch Screen (Remove front cover and connector is located on top of the Touch Screen). **The USB driver is necessary to allow the user to update firmware and screens.**

Please note that it is recommended to connect the mini 5 pin connector before powering the Touch Screen especially when using a Desk top PC. In addition it is also recommended to power the Touch Screen using the same power outlet as the PC.

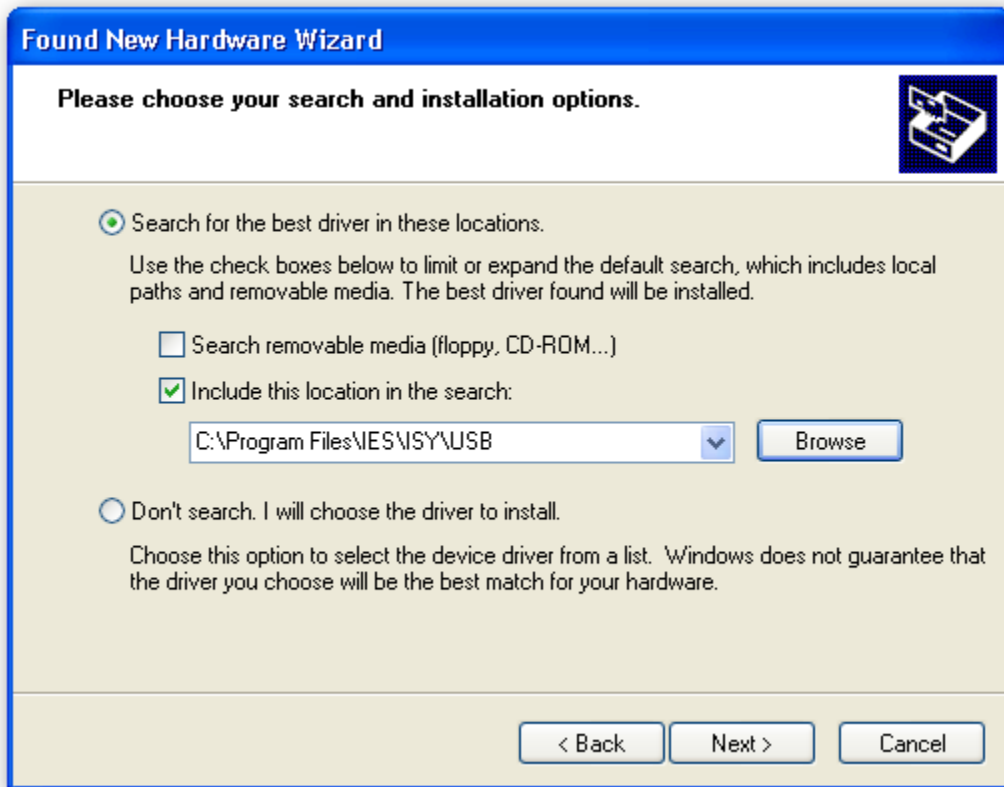
The PC will detect that new hardware is connected and the following screen will be displayed. Click No and then Next



Click Install from a list or specific location and click next.



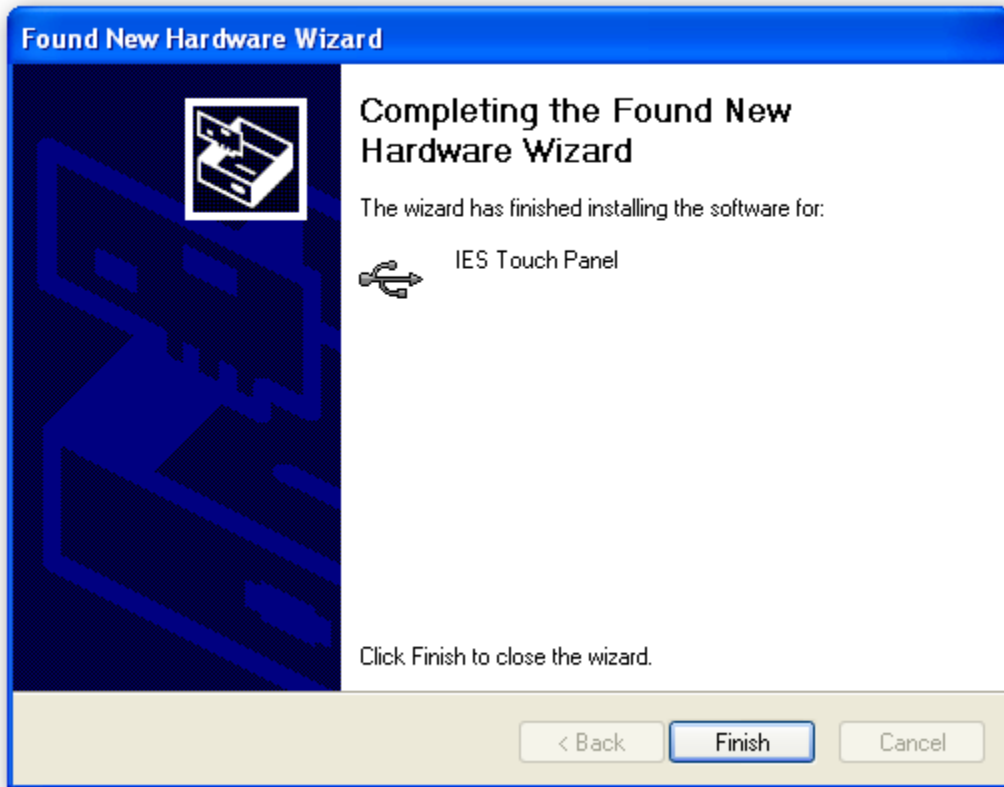
Click Search for best driver in these locations and include this location in the search. Browse for C:\PROGRAM FILES\IES\ISY\USB and click next



Click Continue Anyway



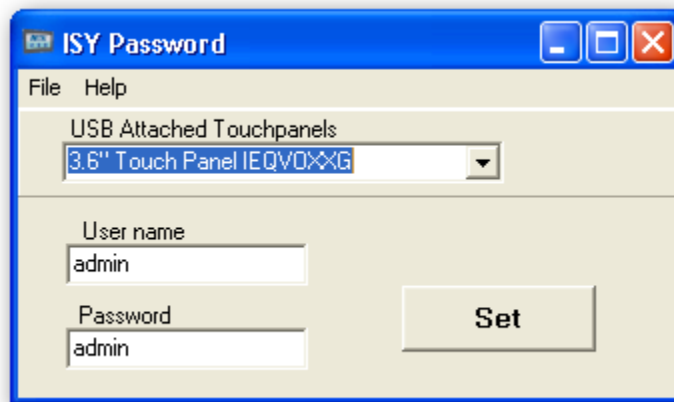
Click Finish. It should be noted that this total procedure will be done **twice** by the computer and then the new hardware (IES Touch Panel) will be recognized and the installation will be complete.



Setting Username and Password

The username and password must be set the same as on the ISY equipment or the Touch Screen will not operate correctly.

Setting user name and password is done using the IES supplies ISYPassword.exe program included with the installation. Simply connect the USB cable to the Touch Screen 5 pin connector and run the ISYpassword.exe. You will enter the username and password and press Set. The username and Password will flash on the Touch Screen. The new username and password will be loaded

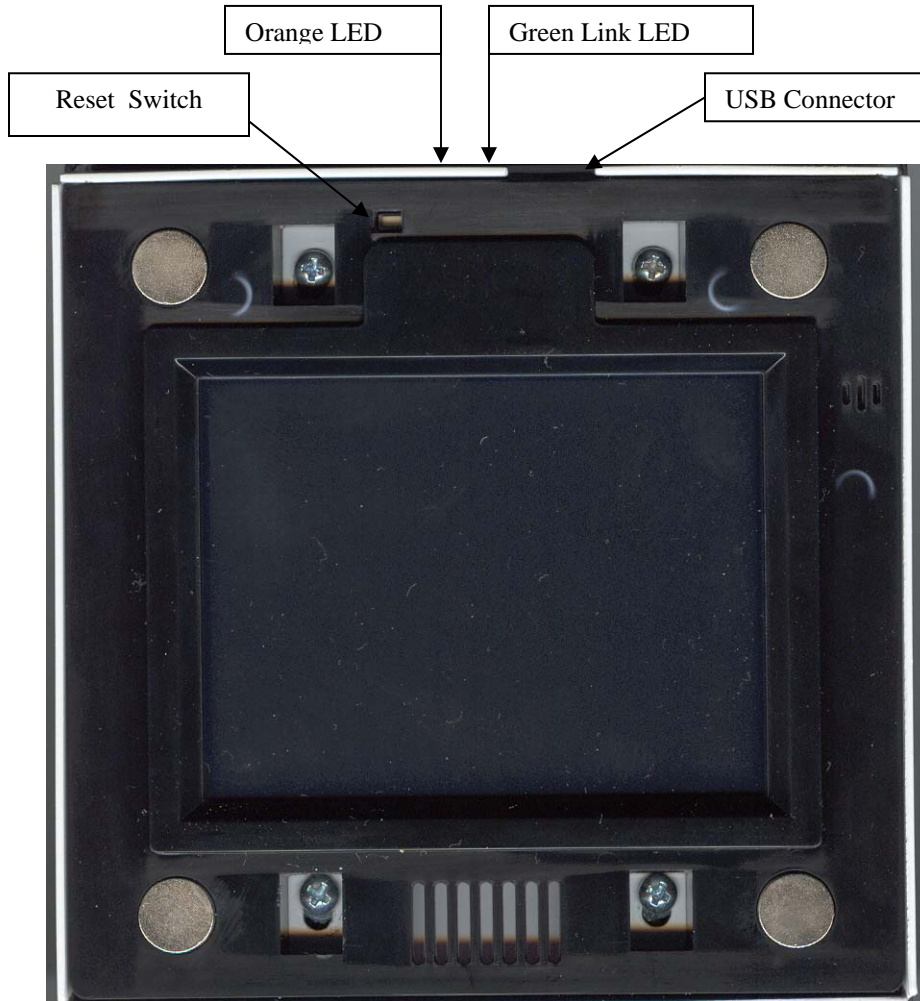


Touch Screen calibration

Touch Screen calibration can be done using the IES SKINS program that can be downloaded from the IES website. Run program and go to tools tab and choose calibrate.

Touch Screen Operation

The Bezel is magnetically attached to the inner metal panel. It can be removed by simply pulling at the sides. The front panel contains the USB connection as well as the Reset Switch.



LED Description

LEDs are visible when the bezel is taken off the unit. The LEDs offer basic diagnostics including linking and Touch Screen Transmit (please note that some earlier units may not have the LEDs)

Green LED is on when unit is linked. If green LED is off unit is not linked and cable and switch should be checked

Orange LED will light when a transmission is sent from the Touch Screen. The LED will normally illuminate when we transmit a message from the Touch Screen to the ISY system to control a device or periodically to answer the ISY heartbeat message.

Welcome Screen

The Welcome screen contains 2 buttons including Scenes and Manual control

The Scenes button will navigate to the scene control. The Manual button navigates to the Manual control screen allowing individual controls for each device

In addition placing your finger over the IES Icon and holding for approximately 3 seconds will navigate to the Setup Screen.



Scenes Screen

The Scenes screen allows the user to activate the Scenes that were programmed via the configuration Software. Simply push on the desired button to activate.



Manual Mode

The manual button navigates to the Rooms screen. The user can choose the desired room and navigate to the devices in that room.



Manual Control

The user can manually control a device by simply choosing the device to be controlled (the button will highlight as shown). The user can then control the following:

On

Off

25% Intensity

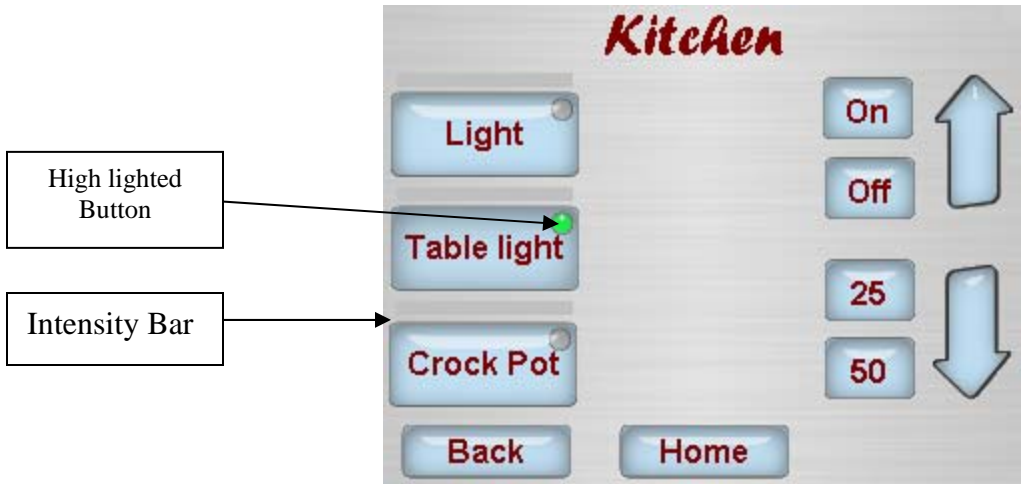
50% Intensity

Use Up/Down arrows to control Intensity manually

Pushing on the device button and holding for about a second (i.e. Light) will toggle the state of the device (On or Off) without the necessity of using the On/Off buttons.

Please note that if a relay module is chosen only the On Off will be displayed.

The Intensity bar shows the level of intensity of the actual lamp.



Setup Screen

The setup screen displayed by pushing on the IES icon on the welcome screen for approximately 3 seconds.

The Setup screen allows the user to set the following:

Brightness: Display brightness

Contrast : Display Contrast

Time: The time that the display is on before backlight is shut off (setting to off (0) will keep display on all the time).

Update: The Update button allows for changes made in the ISY to be updated on the Touch Screen. The changes include additions or deletions of modules as well as time and date update.

User should press Save button to save these settings



Audio Setup Screen

The audio setup screen allows the user to enable the speaker as well as set the speaker volume.

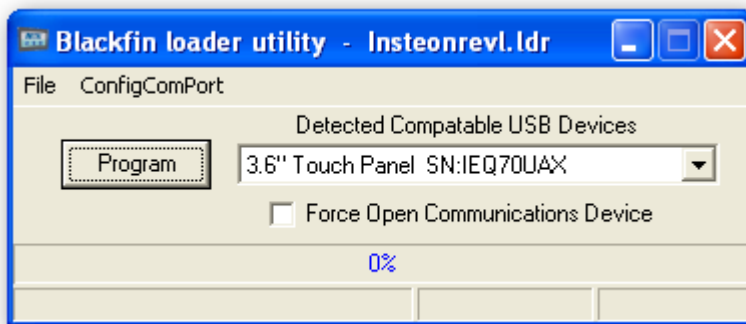


User should press Save button to save these settings

Firmware and Screen Loader Programs

Firmware Loader Program

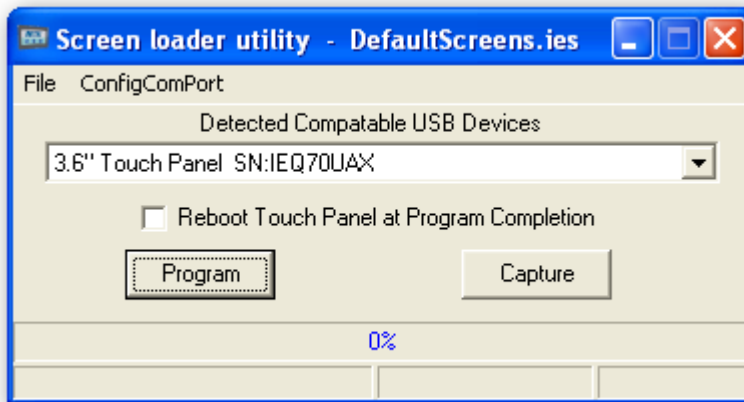
The program loader program allows the user to update the firmware in the Touch Screen. The update is downloaded to the Touch Screen via the USB to mini 5 pin cable. The procedure is as follows:
Run the bfloder program that is found in the Utilities folder (navigate to program files\IES\ISY\ utilities)
The following screen will be seen.



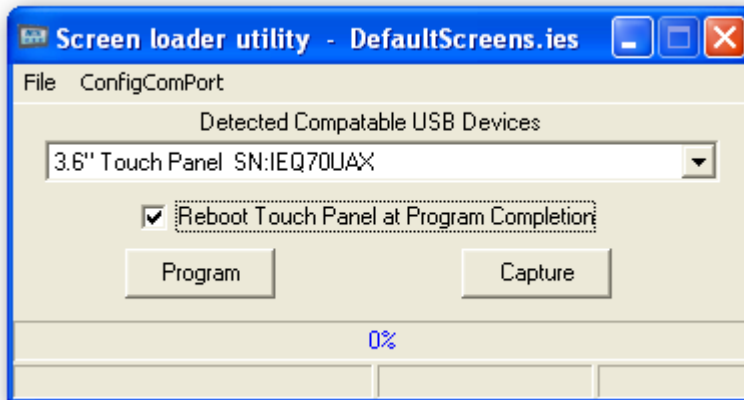
From the file dropdown choose the file to be downloaded to the Touch Screen. The file will be in the firmware folder (navigate to program files\IES\ISY\ utilities\firmware) or alternatively downloaded from the IES website. The file will be a .ldr file. Click on program to download the file (The display may turn white or change colors during the download). Please note that after the file is downloaded the Touch Screen will beep. After initializing the version number will appear on the display (i.e. for version rev n, you will see v1.32n in the upper left hand corner).

Screen Loader Program

The Screen Loader Program allows the user to update the screens in the Touch Screen. The update is downloaded to the Touch Screen via the USB to mini 5 pin cable. The procedure is as follows:
Run the scrloader program that is found in the utilities folder (navigate to program files\IES\ISY\ utilities)
The following screen will be seen.



Check the Reboot Touch Panel at Program Completion box. The following screen will be seen.



From the file menu choose the screen to be downloaded. The file will be in the screens folder (navigate to program files\IES\ISY\ utilities\screens) or alternatively on the IES website. The file will end in .ies (i.e. Defaultscreens.ies).
Click on program to download the file (The display may turn white or change colors during the download). Please note that after the file is downloaded the Touch Screen will beep. The new screen should now be loaded.

Please visit the IES website at www.iescorp-usa.com for Updated Graphics and Firmware.